

Acacia Apartments

134 Briggs Street, Kewdale



Contemporary, stylish and secure living has arrived in Kewdale with Acacia Apartments.

Location is the key with Tomato Lake a short walk away and Belmont Forum and the cafe strip of East Victoria Park a short drive.

Choose from 1 or 2 bedroom apartments with balconies or courtyards and create a home that suits your lifestyle, located within easy reach of shopping, leisure and recreational facilities.

Acacia Apartments are appointed with quality fittings and make a perfect residence for you and your family or a solid investment property.

Approximately 9kms to the Perth CBD and less than 5km to the Burswood entertainment precinct, Acacia Apartments are a rare offering for owners seeking inner suburban Perth living.



Acacia Apartments

134 Briggs Street, Kewdale

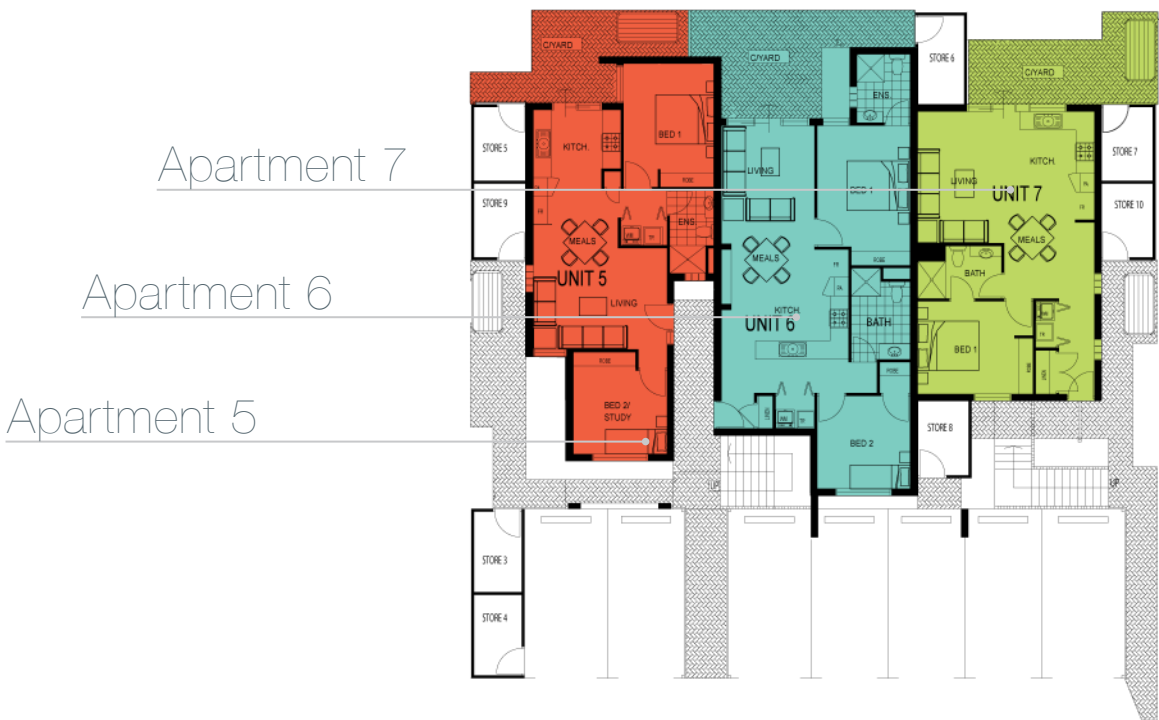


Acacia Apartments

134 Briggs Street, Kewdale



Ground floor



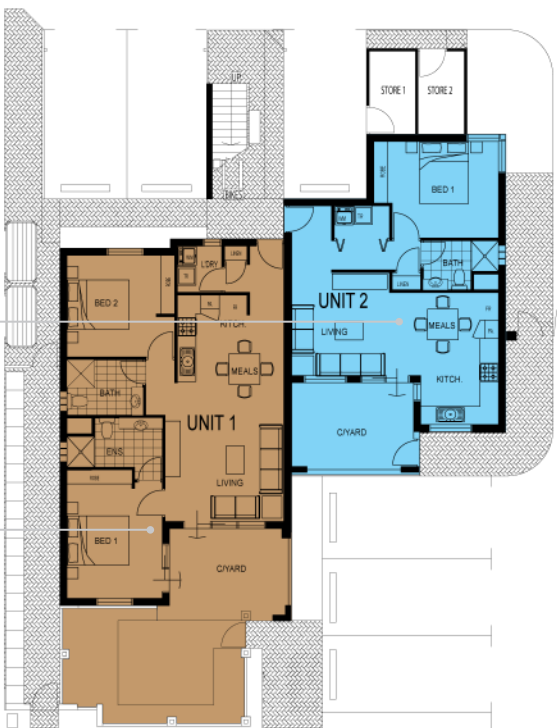
Apartment 7

Apartment 6

Apartment 5

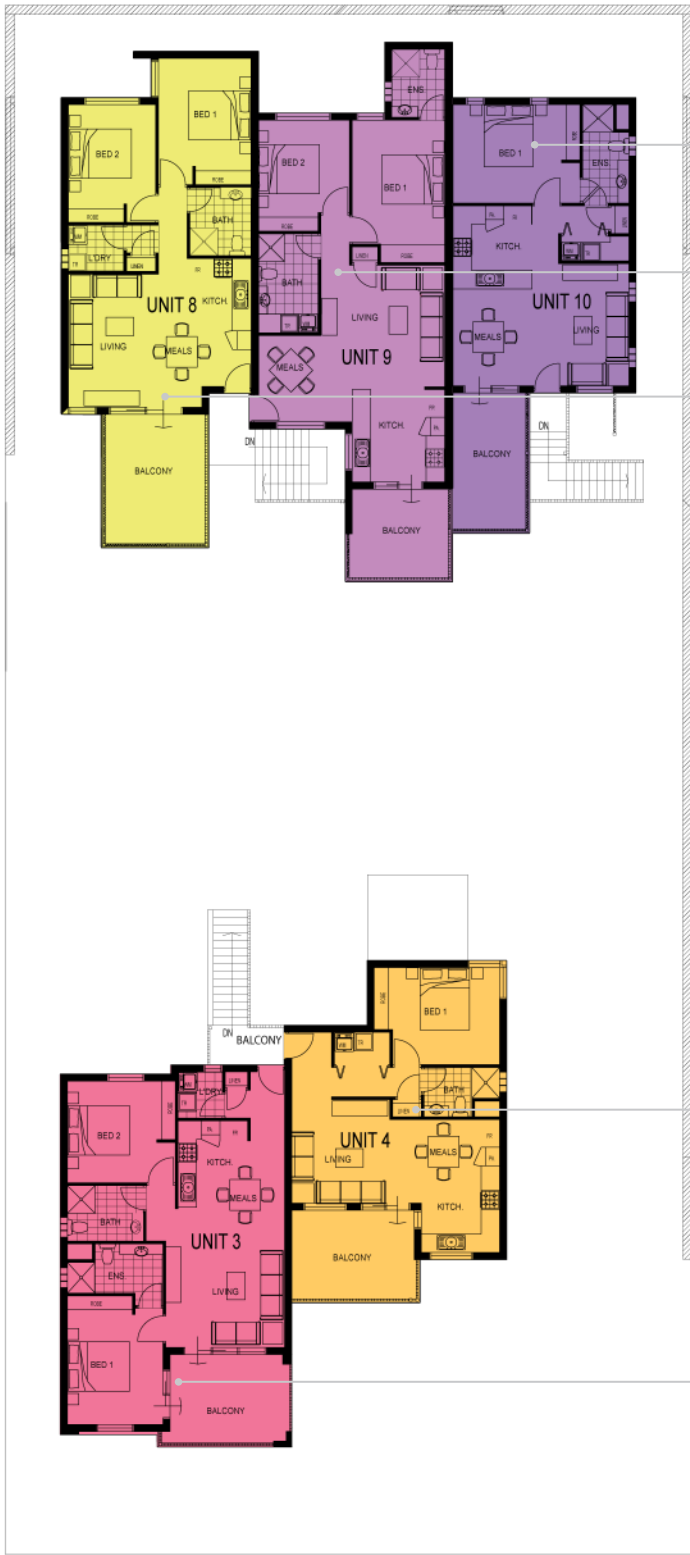
Apartment 2

Apartment 1



BRIGGS STREET

First floor



Apartment 10

Apartment 9

Apartment 8

Apartment 4

Apartment 3

BRIGGS STREET

Project Details

Overview

Developer:	Cedar Cove Pty Limited ATF Acacia Trust
Address:	134 Briggs Street, Kewdale, Western Australia
Configuration:	10 apartments <ul style="list-style-type: none">• 4 x 1 bedroom/1 bathroom• 2 x 2 bedroom/1 bathroom• 4 x 2 bedroom/2 bathroom
Completion:	Early 2015 (estimated)

Contract terms

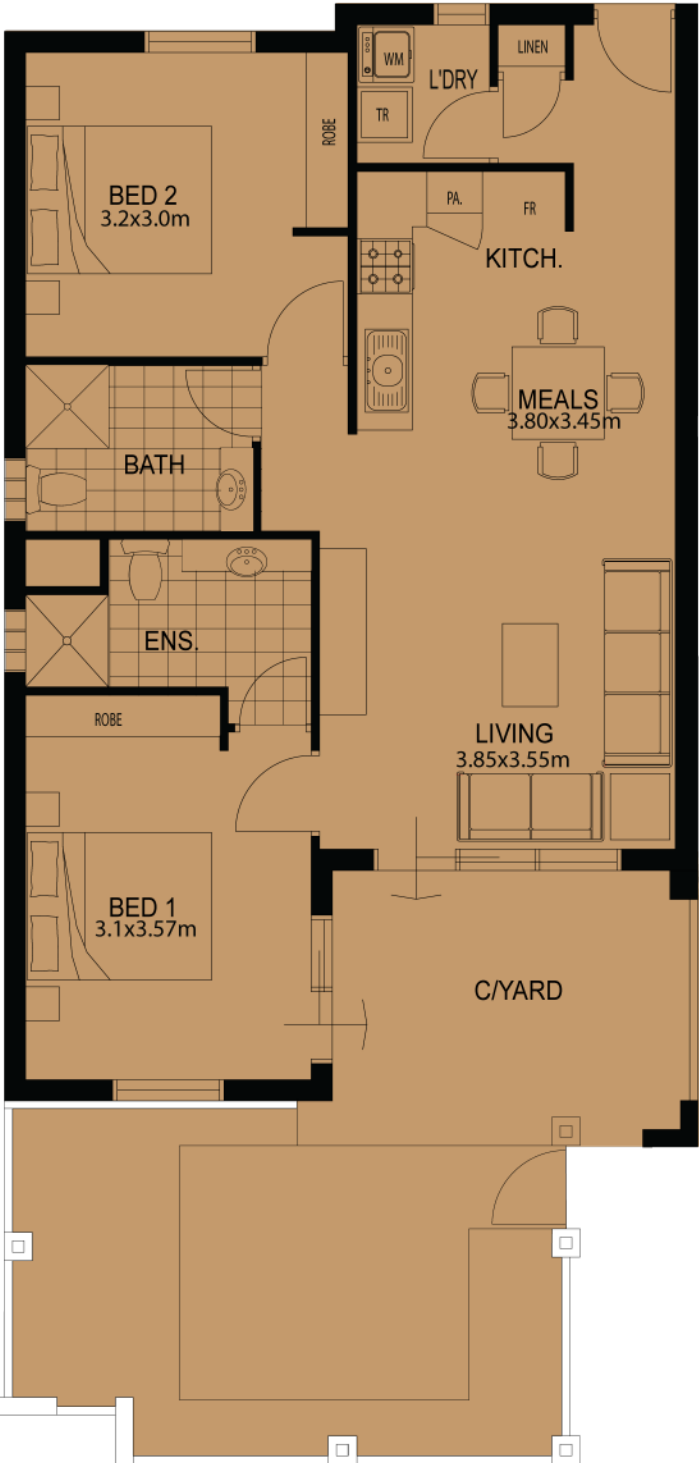
Contract type:	Off the plan with full payment due on settlement
Deposit:	10% of purchase price upon acceptance of contract to be held in Selling Agent's Trust Account. Interest bearing for all contracts with over 3 months until settlement
Deposit bonds:	Limited acceptance by negotiation

Specification summary

- Remote controlled automatic security gate
- Security intercom to each apartment
- Common area landscaping with water wise shrubs and plants with automatic reticulation
- Traditional lever entrance lockset for front door
- Aluminum windows and sliding doors with keyed security locks
- Fly screens to all windows and sliding doors
- Balconies with 400mm x 400mm non slip tiles
- Downlights in living, kitchen & bathroom with oyster fittings in bedrooms
- Venetians blinds in bedrooms and roller blinds in living areas
- Laminated timber flooring on insulation in living area
- Laminated timber flooring on insulation in kitchen area
- Carpet on underlay in bedrooms
- Living area serviced by 2.5HP inverter reverse cycle split air-conditioning system
- Instantaneous electric hot water system
- Double power points throughout with RCD protection
- Hard wired smoke detectors
- High definition digital TV points in living area and master bedroom
- Telephone points in kitchen and master bedroom
- Stainless Steel electric hotplate with 4 elements
- Stainless Steel electric multi function oven
- Stainless Steel range hood
- Stainless Steel multi program dishwasher
- Engineered Stone square edged bench top with tiled splash back
- Laminated cupboard doors with soft closers and stainless steel handles
- Fridge recess minimum 800mm to cater for up to 700L fridge (not side by side)
- Semi-frameless glass shower enclosure with pivot doors
- Vitreous china vanity basin with chrome mixer tap
- Laminated square edge vanity bench top
- Vanity cupboards laminated with soft closers and stainless steel handles
- 1000mm high frameless mirror over vanity cupboards
- Vitreous china toilet suite

Acacia Apartments

134 Briggs Street, Kewdale



Apartment 1

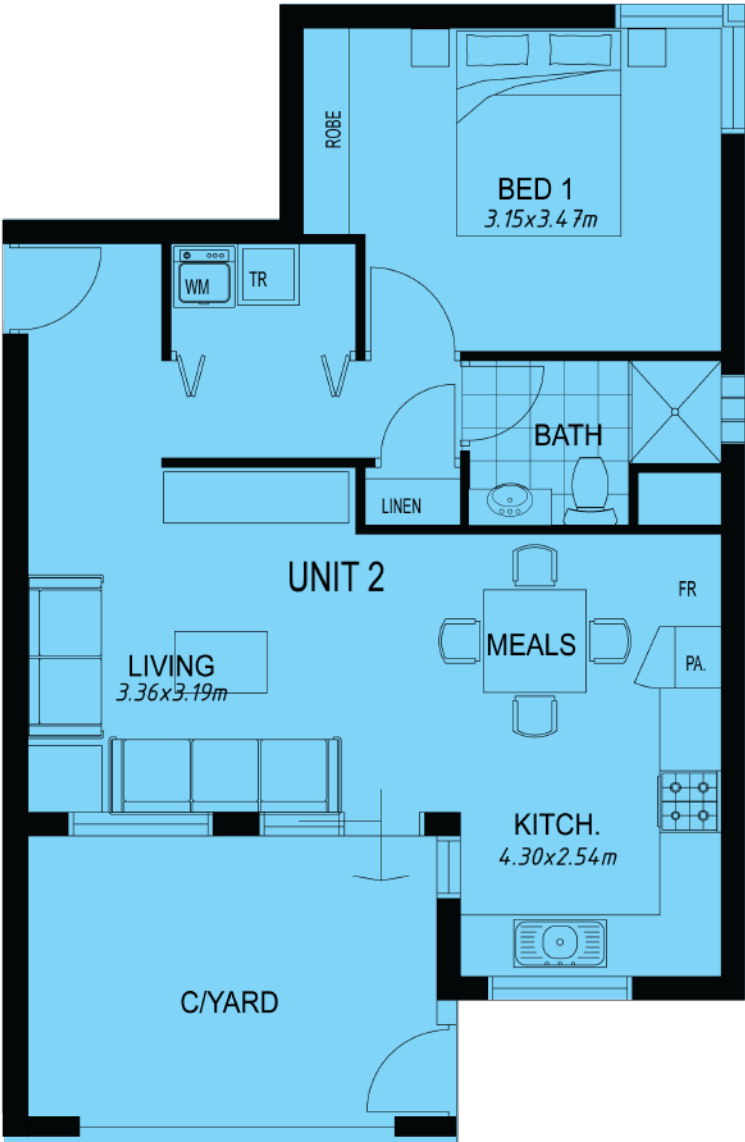
- 

2
2
1

Internal	70m ²
Balcony	No
Courtyard	Yes

Acacia Apartments

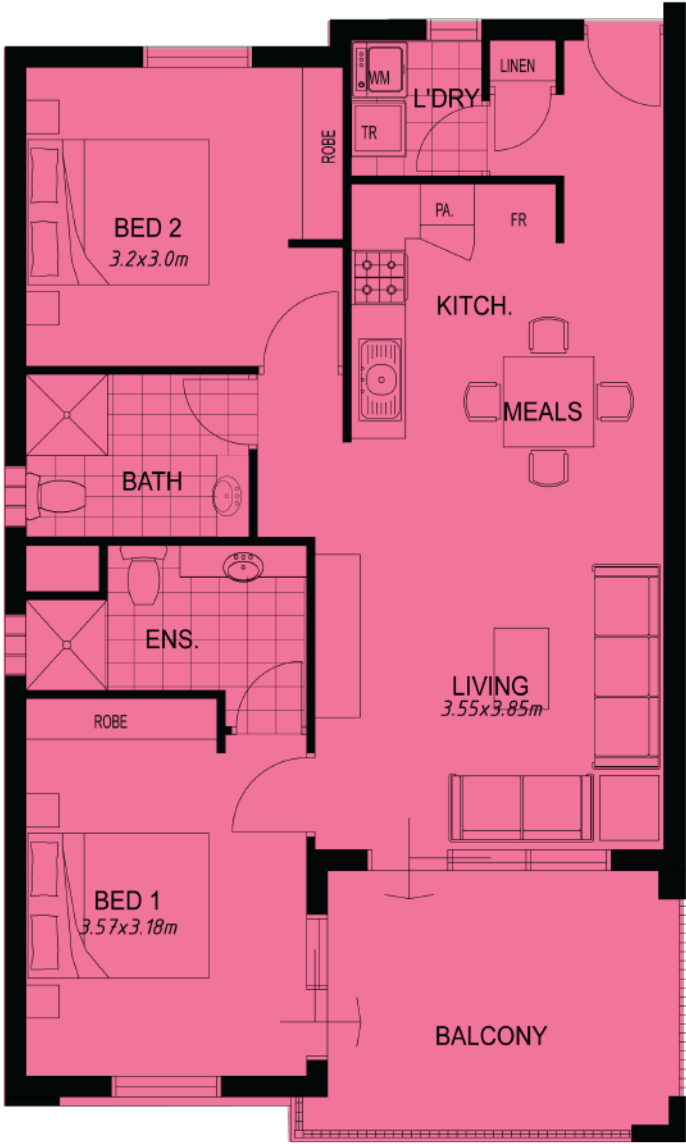
134 Briggs Street, Kewdale





Apartment 2

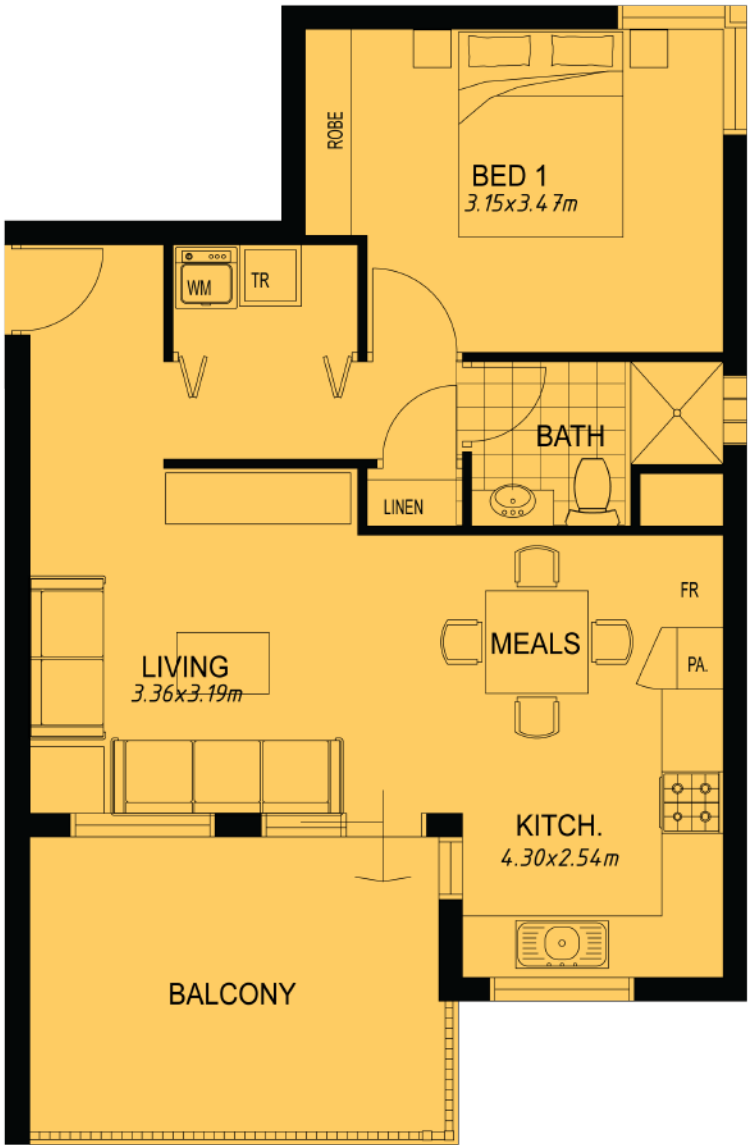
	1
	1
	1

Internal	50m ²
Balcony	No
Courtyard	Yes



Apartment 3

	2	Internal	69m ²
	2	Balcony	Yes
	1	Courtyard	No





Apartment 4

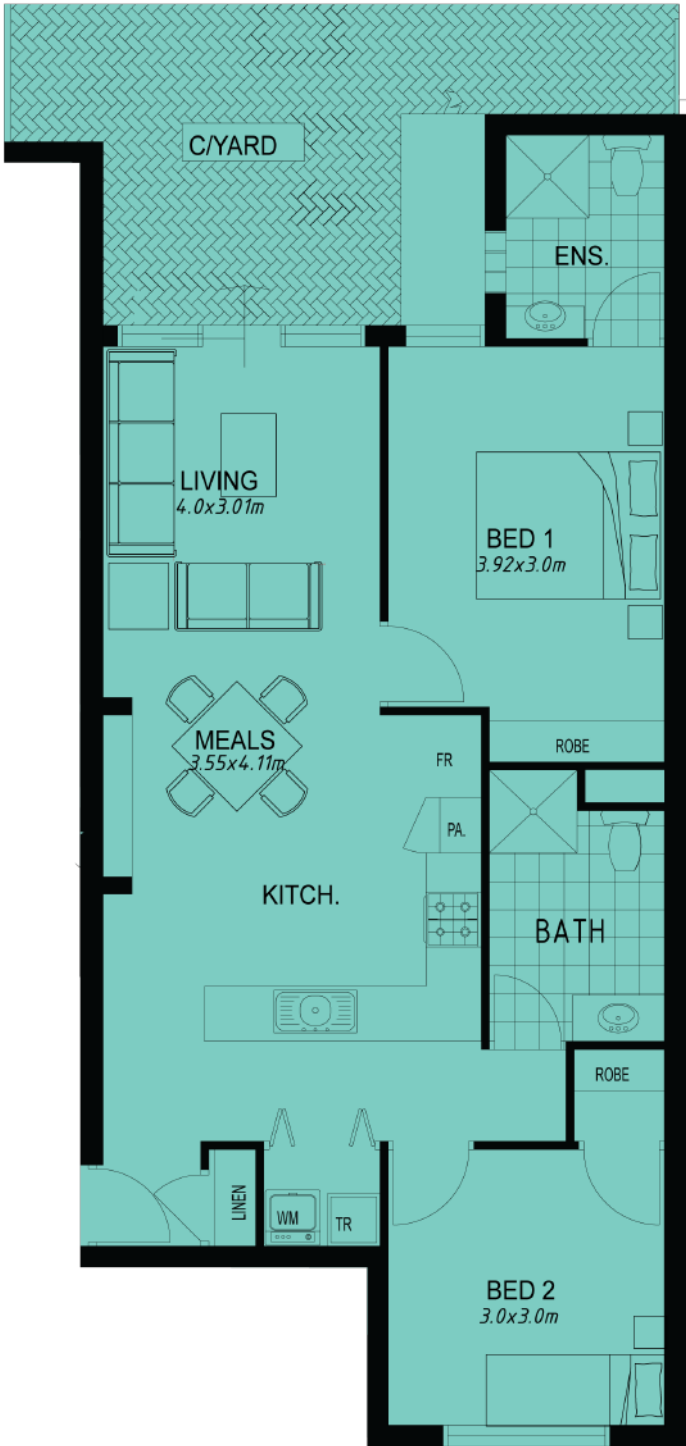
	1
	1
	1

Internal	50m ²
Balcony	Yes
Courtyard	No





Apartment 5

	2	Internal	56m ²
	1	Balcony	No
	1	Courtyard	Yes




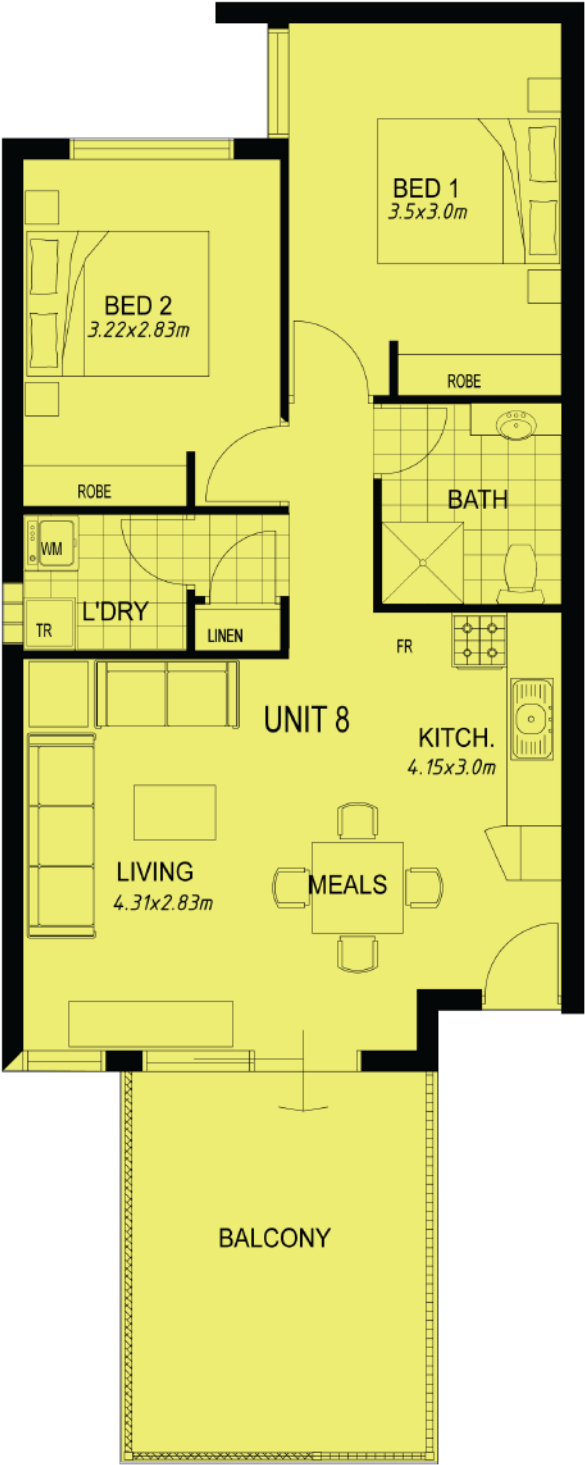
Apartment 6

	2	Internal	69m ²
	2	Balcony	No
	1	Courtyard	Yes




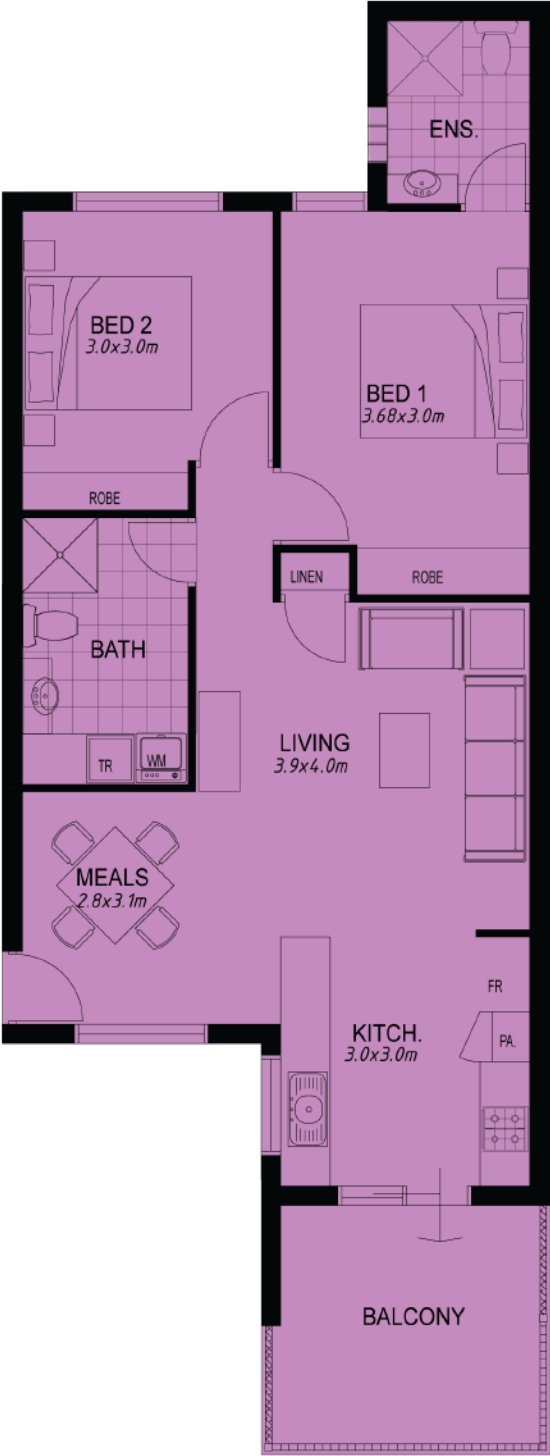
Apartment 7

	1	Internal	52m ²
	1	Balcony	No
	1	Courtyard	Yes



Apartment 8

	2	Internal	62m ²
	1	Balcony	Yes
	1	Courtyard	No



Apartment 9

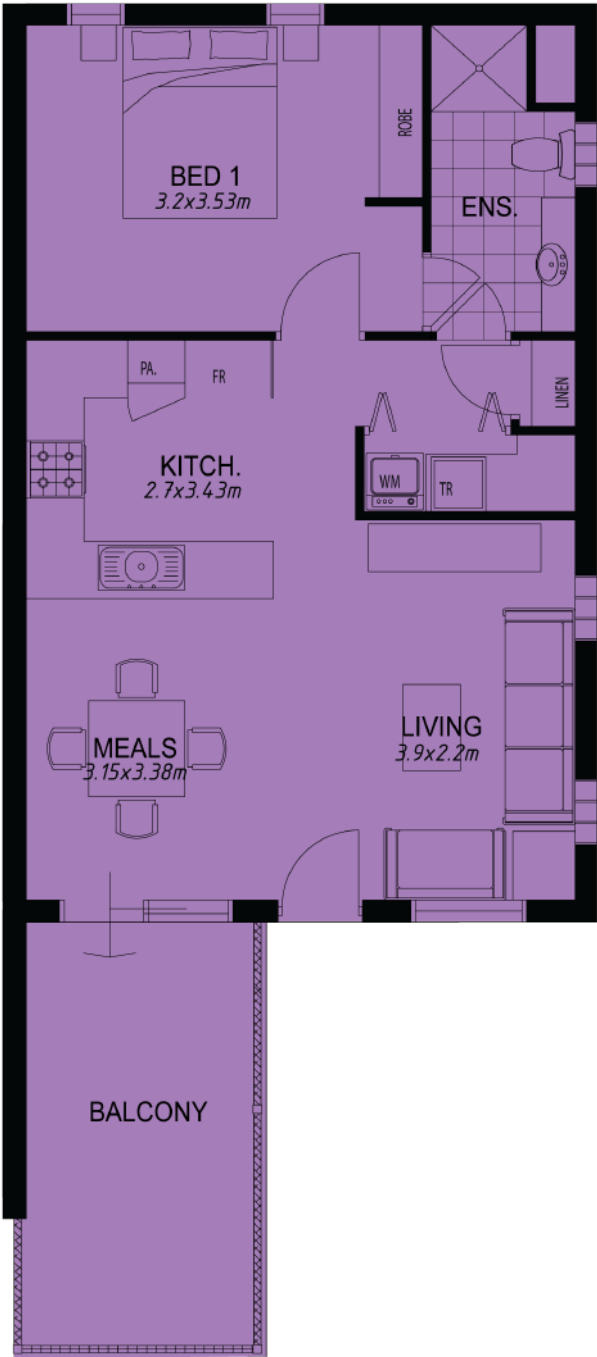
- 

2
- 

2
- 

1

Internal	70m ²
Balcony	Yes
Courtyard	No



Apartment 10

- 

1
1
1

Internal	52m ²
Balcony	Yes
Courtyard	No